



Trofeul Carpati NIRO 2025



2. round

Match Team Statistics

Match No.

Austria 19 - 33 Portugal

(12 - 18) (7 - 15)

22.11.2025. 15:00

Attendance: 250

TeraPlast Arena

Referees: Andrea Alejandra Pepe (ITA) / Simona Stancu (ROU)

Shot distribution by player

3 K. Pandza

2/2		

2 miss. 2 block

4 A. Barnjak

0/1		0/2

10 L. Baljak

14 K. Schlegel

		1/2

1 post 1 miss.

18 K. Dramac

2/2		
1/1		
0/1		

1 block

23 L. Kovacs

		1/1

27 A. Egbaimo

		2/2

1 post

29 I. Ivancok Soltic

1/1		

54 S. Sabatnig

0/1		0/1

64 A. Pandza

1/1		
1/1		2/3
1/1		

1 miss.

77 M. Scheiderbauer

0/1		

1 miss.

89 E. Stankovic

		1/2
		1/1

97 F. Egger

1/1		
0/2		0/2

1/1 lob

TOTAL

4/4		
3/8		7/15
3/4		1/1

2 post 5 miss. 3 block 1/1 lob

Saves distribution goalkeepers

1 L. Ivancok

0/1		

21 A. Mamic

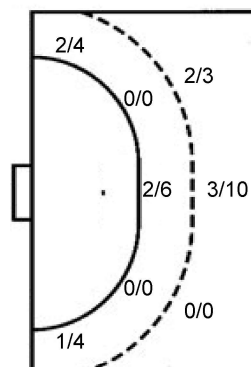
0/1	0/2	0/5
5/9	1/1	2/18
0/1	0/2	2/3

TOTAL

0/1	0/2	0/5
5/9	1/1	2/18
0/1	0/3	2/3

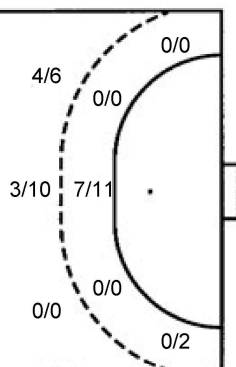
Shots by position

ATTACK



7m penalties	3/4
Fastbreak	1/3
Breakthrough	5/8
Long dist.	0/1

DEFENSE



7m penalties	4/5
Fastbreak	4/5
Breakthrough	10/11
Long dist.	1/1

Shooting statistics

Position	Goals	Sav.	Miss.	Post	Blk.	Total	%
Back (9m)	5	3	2	0	3	13	38
Line (6m)	2	3	0	1	0	6	33
Wing	3	4	1	0	0	8	38
7m penalties	3	1	0	0	0	4	75
Fastbreak	1	2	0	0	0	3	33
Breakthrough	5	1	1	1	0	8	63
Total	19	14	4	2	3	42	45

Jersey number Tot. Total shooting 6m 6m (line) shooting 9m 9m shooting Wng Wing shooting FB Fastbreak sh. 7m 7m penalty sh.
 Brk. Breakthrough sh. LD Long distance sh. As. Assists PC Pass clear chance E7 Earned 7m pen. TF Technical faults St. Steals
 2m 2m punishments C7. Committed 7m E2 Earned 2m pun. YC. Yellow cards R/B Red/Blue cards Blk. Blocks S Starting Line-up

Handball statistics and livescore by Toma-soft ltd (www.toma-soft.hr)



Trofeu Carpati NIRO 2025



2. round

Match Team Statistics

Austria 19 - 33 Portugal

22.11.2025. 15:00

Match No.

(12 - 18) (7 - 15)

Attendance: 250

TeraPlast Arena

Referees: Andrea Alejandra Pepe (ITA) / Simona Stancu (ROU)

Portugal

Players		Goals / shots										Attack					Def.				Penalties				TP	Val.			
#	Surname and name	S	Tot.	%	9m	6m	Wing	7m	FB	Brk.	LD	As.	PC	E7	E2	TF	St.	C7	Blk	R	F	YC	2m	R	B				
8	RAMOS SEQUEIRA Constanca		4/4	100				2/2		2/2								1			1	1	1				31:52	1.00	
9	POLICARPO SILVA Ana Carolina																										5:18	0.00	
11	BENTO CAMPOS Rita		3/3	100		2/2				1/1												1					9:26	3.25	
17	MAHOUIN RIBEIRO Lola Salome	S	1/3	33			0/1		0/1	1/1								1									23:38	-1.50	
18	COSTA ROSA Matilde Felicio	S										1															27:43	8.50	
19	DA SILVA LIMA Patricia Andreia		3/3	100	1/1					2/2			1		2												20:27	1.75	
22	RODRIGUES Nádia Priscila	S	3/6	50		3/6								3	2			1	1		4		1				31:59	5.25	
25	RESENDE REBELO Luciana	S	1/2	50	1/2								3				1										11:13	2.50	
29	OLIVEIRA GARCES Joana Ferreira		1/2	50			0/1		1/1								1										47:54	1.25	
61	GOMES JESUS Luana Miriam	S																									43:26	0.00	
70	AZEVEDO OLIVEIRA Mariana		1/1	100		1/1								1	1					1							15:19	2.25	
73	SANTOS RESENDE Joana		5/9	56	3/5	0/1		2/3						1													19:34	2.00	
77	MINCIUNA Mihaela Oana	S	5/6	83	0/1	1/1				3/3	1/1				1	4											36:57	2.00	
92	NOGUEIRA MARTINS Caroline Aparecida											1			1												27:59	8.50	
98	COSTA MORENO Debora Solange		2/3	67	0/1				2/2			1							2		4		2				31:06	1.50	
99	GOMES UNJANQUE Maria Joao	S	4/9	44	2/6				1/1	1/2		3	1			1	1	1			2	1					36:09	4.75	
	Team / bench																												
	TOTAL		33/51	65	7/16	7/11	0/2	4/5	4/5	10/11	1/1	9	2	5	4	9	2	4	3	1	12	1	5	0	0				

Goalkeepers		Saves / shots										Val.
#	Surname and name	Tot.	%	9m	6m	Wing	7m	FB	Brk.	LD		
18	COSTA ROSA Matilde Felicio	7/19	37	2/7	1/2	1/3	1/2	2/3	0/2			8.50
92	NOGUEIRA MARTINS Caroline Aparecida	7/14	50	1/1	2/3	3/4	0/2		1/4			8.50
	TOTAL	14/33	42	3/8	3/5	4/7	1/4	3/3	1/6	0/0		

Coach: Sheila Cristina Rito Santos

Number of attacks: 55, Efficiency: 60%, Average Duration: 31.49 seconds

Attack by type of defense

	Shots	9m	6m	Wing	TF	E7	E2
On def. 6-0	24/40	7/16	7/11	0/2	9	5	4
Fastbreak	4/5				0	0	0

Defense by type

	Total	9m	6m	Wing	Stl.	C7	2m
Def. 6-0	15/35	5/13	2/6	3/8	2	4	5
Fastbreak	1/3				0	0	0

Attack with superiority / minority / goalkeeper out

	Attack				Reaction		
	Att.	Eff.	Shots	TF	FB	LD	Tot.
7 on 6 (GK out)	6	83%	5/6	0	0/0	0/0	0/0
6 on 6 (GK out)	4	100%	4/4	0	0/0	0/1	0/1
6 on 6	33	48%	16/26	7			
5 on 6	2	100%	2/2	0			
7 on 5 (GK out)	1	100%	1/1	0	0/0	0/0	0/0
6 on 5	9	56%	5/7	2			

Player superiority / GK out counted at the end of attack (in case it changes during attack)

Defense with superiority / minority / goalkeeper out

	Attack				Reaction		
	Att.	Eff.	Shots	TF	FB	LD	Tot.
7 on 6 (GK out)	2	50%	1/1	1	0/0	0/0	0/0
7 on 5 (GK out)	1	100%	1/1	0	0/0	0/0	0/0
6 on 6 (GK out)	5	20%	1/3	2	1/1	1/1	2/2
6 on 6	36	33%	12/24	12			
6 on 5	8	38%	3/7	1			
5 on 6	2	50%	1/1	1			

Numbers show attacking numbers of opponent. Lower efficiency of opponent means better defense of this team

Jersey number Tot. Total shooting 6m 6m (line) shooting 9m 9m shooting Wng Wing shooting FB Fastbreak sh. 7m 7m penalty sh.
 Brk. Breakthrough sh. LD Long distance sh. As. Assists PC Pass clear chance E7 Earned 7m pen. TF Technical faults St. Steals
 2m 2m punishments C7. Committed 7m E2 Earned 2m pun. YC. Yellow cards R/B Red/Blue cards Blk. Blocks S Starting Line-up



Trofeu Carpati NIRO 2025



2. round

Match Team Statistics

Match No.

Austria 19 - 33 Portugal

(12 - 18) (7 - 15)

22.11.2025. 15:00

Attendance: 250

TeraPlast Arena

Referees: Andrea Alejandra Pepe (ITA) / Simona Stancu (ROU)

Shot distribution by player

8 C. Ramos Sequeira

1/1		2/2
	1/1	

9 A. Policarpo Silva

11 R. Bento Campos

		3/3

17 L. Mahouin Ribeiro

		1/1
0/1		0/1

19 P. Da Silva Lima

	1/1	
2/2		

22 N. Rodrigues

	1/1	
		2/3
		0/1

1 miss.

25 L. Resende Rebelo

		1/1
	0/1	

29 J. Oliveira Garces

		1/1

1 miss.

61 L. Gomes Jesus

70 M. Azevedo Oliveira

1/1		

73 J. Santos Resende

		1/1
1/3		1/1
	2/2	0/1

1 block

77 M. Minciuna

		4/4
		1/1

1 miss.

98 D. Costa Moreno

0/1		2/2

99 M. Gomes Unjanque

1/1		1/1
0/1		2/2

2 post 1 miss. 1 block

TOTAL

1/1	2/2	5/5
4/9	0/1	16/18
1/1	3/3	1/3

2 post 4 miss. 2 block

Saves distribution goalkeepers

18 M. Costa Rosa

0/4		
4/7		2/5
1/2		

92 C. Nogueira Martins

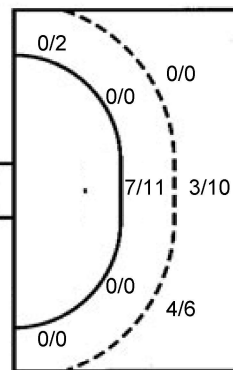
1/1		6/10
0/2		0/1

TOTAL

0/4		
5/8		8/15
1/4		0/1

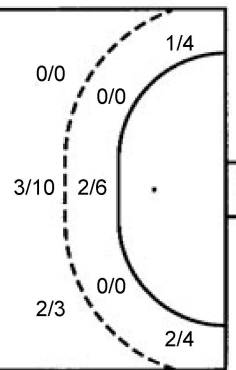
Shots by position

ATTACK



7m penalties 4/5
Fastbreak 4/5
Breakthrough 10/11
Long dist. 1/1

DEFENSE



7m penalties 3/4
Fastbreak 1/3
Breakthrough 5/8
Long dist. 0/1

Shooting statistics

Position	Goals	Sav.	Miss.	Post	Blk.	Total	%
Back (9m)	7	4	2	1	2	16	44
Line (6m)	7	3	1	0	0	11	64
Wing	0	1	1	0	0	2	0
7m penalties	4	1	0	0	0	5	80
Fastbreak	4	1	0	0	0	5	80
Breakthrough	10	0	0	1	0	11	91
Total	32	10	4	2	2	50	64

Jersey number Tot. Total shooting 6m 6m (line) shooting 9m 9m shooting Wng Wing shooting FB Fastbreak sh. 7m 7m penalty sh.
Brk. Breakthrough sh. LD Long distance sh. As. Assists PC Pass clear chance E7 Earned 7m pen. TF Technical faults St. Steals
2m 2m punishments C7. Committed 7m E2 Earned 2m pun. YC. Yellow cards R/B Red/Blue cards Blk. Blocks S Starting Line-up

Handball statistics and livescore by Toma-soft ltd (www.toma-soft.hr)

