



# Trofeul Carpati NIRO 2025



3. round

Match Team Statistics

## Czech Republic 29 - 41 Portugal

23.11.2025. 15:00

Match No.

(15 - 20) (14 - 21)

Attendance: 300

TeraPlast Arena

Referees: Adrian Georgescu (ROU) / Bogdan Isdraila (ROU)

### Czech Republic

Players		Goals / shots										Attack				Def.				Penalties			TP	Val.				
#	Surname and name	S	Tot.	%	9m	6m	Wing	7m	FB	Brk.	LD	As.	PC	E7	E2	TF	St.	C7	Blk	R	F	YC	2m	R	B			
14	KORDOVSKA Kamila	S	6/8	75	4/4					2/3	0/1	1			1	1		1	1		1						48:29	4.25
17	PEJSOVA Karolina																										16:37	0.00
22	SUSTACKOVA Marketa	S	1/4	25	0/3					1/1		1	1		1		1										50:20	4.00
23	POLAKOVA Marie		0/1	0	0/1										1			1									9:34	-2.25
24	DESORTOVA Eliska		8/11	73	3/5	0/1		1/1		4/4		2	1		1	4				1	2						22:40	6.50
25	KNEDLOVA Viktorie		0/1	0						0/1																	2:17	-0.75
27	WIZUROVA Patricie	S													1												58:59	-5.75
34	FRANKOVA Julie	S	1/1	100					1/1			1				2	1						6				23:17	2.50
35	SMETKOVA Valerie	S	7/13	54	0/3		2/4	0/1	1/1	4/4				2	1	2											53:06	4.50
39	VAVROVA Veronika		1/2	50	0/1					1/1				2		5	1				2						24:10	-1.50
48	KOVAROVA Sara														1												8:28	-1.00
68	KUBALKOVA Anna		2/4	50	0/1		1/2		1/1														1				23:36	-0.75
79	NOVOTNA Sabrina																											0.00
88	KUBALKOVA Klara	S	2/3	67	1/1					0/1	1/1						1										21:32	2.50
91	JESTRIBKOVA Anna		1/1	100		1/1							1														23:56	1.75
96	CHOLEVOVA Charlotte	S	0/3	0	0/3							1				2		1									32:59	-3.25
Team / bench																							1					
TOTAL			29/52	56	8/22	1/2	3/6	1/2	3/3	12/15	1/2	6	5	2	4	19	4	3	1	1	13	1	2	0	0			

Goalkeepers		Saves / shots										Val.
#	Surname and name	Tot.	%	9m	6m	Wing	7m	FB	Brk.	LD		
27	WIZUROVA Patricie	10/51	20	5/18	4/10	0/4	0/3	0/4	1/12		-5.75	
79	NOVOTNA Sabrina										0.00	
TOTAL		10/51	20	5/18	4/10	0/4	0/3	0/4	1/12	0/0		

Coach: Tomas Hlavaty

Number of attacks: 69, Efficiency: 42%, Average Duration: 23.07 seconds

### Attack by type of defense

	Shots	9m	6m	Wing	TF	E7	E2
On def. 6-0	24/45	8/22	1/2	3/6	19	2	4
Fastbreak	3/3				0	0	0

### Defense by type

	Total	9m	6m	Wing	Stl.	C7	2m
Def. 6-0	34/51	13/21	6/11	4/4	4	3	2
Fastbreak	4/7				0	0	0

### Attack with superiority / minority / goalkeeper out

	Attack				Reaction		
	Att.	Eff.	Shots	TF	FB	LD	Tot.
7 on 5 (GK out)	1	100%	1/1	0	0/0	0/0	0/0
6 on 6 (GK out)	2	0%	0/2	0	0/0	0/0	0/0
6 on 6	56	41%	23/41	15			
6 on 5	9	56%	5/6	3			
5 on 6	1	0%	0/0	1			

Player superiority / GK out counted at the end of attack (in case it changes during attack)

### Defense with superiority / minority / goalkeeper out

	Attack				Reaction		
	Att.	Eff.	Shots	TF	FB	LD	Tot.
7 on 6 (GK out)	6	67%	4/5	1	1/1	0/0	1/1
6 on 6 (GK out)	6	33%	2/3	3	0/0	0/0	0/0
6 on 6	55	56%	31/46	9			
5 on 6	2	100%	2/2	0			
7 on 5 (GK out)	2	50%	1/2	0	0/0	0/0	0/0
6 on 5	1	100%	1/1	0			

Numbers show attacking numbers of opponent. Lower efficiency of opponent means better defense of this team

# Jersey number Tot. Total shooting 6m 6m (line) shooting 9m 9m shooting Wng Wing shooting FB Fastbreak sh. 7m 7m penalty sh.  
 Brk. Breakthrough sh. LD Long distance sh. As. Assists PC Pass clear chance E7 Earned 7m pen. TF Technical faults St. Steals  
 2m 2m punishments C7. Committed 7m E2 Earned 2m pun. YC. Yellow cards R/B Red/Blue cards Blk. Blocks S Starting Line-up



# Trofeul Carpati NIRO 2025



3. round

## Match Team Statistics

## Czech Republic 29 - 41 Portugal

23.11.2025. 15:00

Match No.

(15 - 20) (14 - 21)

Attendance: 300

TeraPlast Arena

Referees: Adrian Georgescu (ROU) / Bogdan Isdraila (ROU)

## Shot distribution by player

### 14 K. Kordovska

1/1		
1/1	2/3	2/2

1 miss.

### 17 K. Pejsova


1 miss.

### 22 M. Sustackova

1/1		
	0/1	

1 miss. 1 block

### 23 M. Polakova

0/1		

1 miss.

### 24 E. Desortova

1/1		
1/1		1/1
1/1	1/2	3/3

1 post 1 miss.

### 25 V. Knedlova

	0/1	

1 miss.

### 34 J. Frankova


1/1 lob

### 35 V. Smetkova

1/1		1/1
3/3		2/3
0/1	0/1	0/1

1 post 1 miss.

### 39 V. Vavrova

		1/1

1 miss.

### 48 S. Kovarova


1 miss.

### 68 A. Kubalkova

		0/1
		1/1
		1/1

1 miss.

### 88 K. Kubalkova

		1/1
		1/1

1 post

### 91 A. Jestřibkova

	1/1	

1 miss.

### 96 C. Cholevova

0/1		0/1

1 block

## TOTAL

3/3	0/1	1/2
5/6	0/1	6/7
2/4	4/7	7/9

3 post 6 miss. 2 block 1/1 lob

## Saves distribution goalkeepers

### 27 P. Wizurova

0/5	4/5	0/10
3/8		1/8
0/5	2/5	0/5

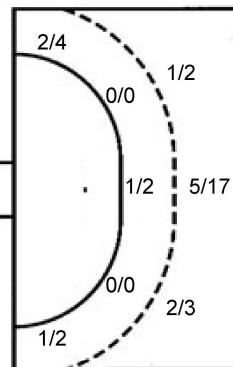
### 79 S. Novotna


## TOTAL

0/5	4/5	0/10
3/8		1/8
0/5	2/5	0/5

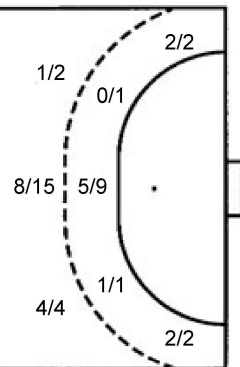
## Shots by position

### ATTACK



7m penalties	1/2
Fastbreak	3/3
Breakthrough	12/15
Long dist.	1/2

### DEFENSE



7m penalties	3/3
Fastbreak	4/7
Breakthrough	11/15
Long dist.	0/0

## Shooting statistics

Position	Goals	Sav.	Miss.	Post	Bik.	Total	%
Back (9m)	8	9	2	1	2	22	36
Line (6m)	1	0	1	0	0	2	50
Wing	3	0	2	1	0	6	50
7m penalties	1	1	0	0	0	2	50
Fastbreak	3	0	0	0	0	3	100
Breakthrough	12	2	0	1	0	15	80
<b>Total</b>	<b>28</b>	<b>12</b>	<b>5</b>	<b>3</b>	<b>2</b>	<b>50</b>	<b>56</b>

# Jersey number Tot. Total shooting 6m 6m (line) shooting 9m 9m shooting Wng Wing shooting FB Fastbreak sh. 7m 7m penalty sh.  
 Brk. Breakthrough sh. LD Long distance sh. As. Assists PC Pass clear chance E7 Earned 7m pen. TF Technical faults St. Steals  
 2m 2m punishments C7. Committed 7m E2 Earned 2m pun. YC. Yellow cards R/B Red/Blue cards Blk. Blocks S Starting Line-up

Handball statistics and livescore by Toma-soft ltd (www.toma-soft.hr)



# Trofeu Carpati NIRO 2025



3. round

Match Team Statistics

## Czech Republic 29 - 41 Portugal

23.11.2025. 15:00

Match No.

(15 - 20) (14 - 21)

Attendance: 300

TeraPlast Arena

Referees: Adrian Georgescu (ROU) / Bogdan Isdraila (ROU)

### Portugal

Players		Goals / shots									Attack					Def.				Penalties			TP	Val.					
#	Surname and name	S	Tot.	%	9m	6m	Wing	7m	FB	Brk.	LD	As.	PC	E7	E2	TF	St.	C7	Blk	R	F	YC	2m	R	B				
8	RAMOS SEQUEIRA Constanca		4/4	100				1/1	1/1	2/2		1	1			1	1					1		1			22:49	4.00	
9	POLICARPO SILVA Ana Carolina		1/3	33		0/1				1/2		1		1								1					23:12	1.50	
11	BENTO CAMPOS Rita		3/4	75		2/3	1/1							1		2											22:34	1.00	
17	MAHOUIN RIBEIRO Lola Salome		1/1	100			1/1					1															16:58	2.00	
18	COSTA ROSA Matilde Felicio	S																									25:59	4.25	
19	DA SILVA LIMA Patricia Andreia		3/8	38	0/1	1/2			0/2	2/3		3			1	2	1					1					15:09	2.50	
22	RODRIGUES Nádia Priscila	S	1/1	100		1/1																	2	1			21:02	0.00	
25	RESENDE REBELO Luciana	S	9/10	90	8/8					1/2		3				3	2					2					58:03	10.75	
29	OLIVEIRA GARCES Joana Ferreira	S	2/2	100			1/1		1/1					1		2											37:15	1.00	
61	GOMES JESUS Luana Miriam	S	3/4	75	0/1	1/1	1/1		1/1									2				2	1				53:11	0.00	
70	AZEVEDO OLIVEIRA Mariana		1/2	50		1/2											1			1	1						3:06	1.50	
73	SANTOS RESENDE Joana	S	4/6	67	1/2				2/2		1/2																15:29	1.75	
77	MINCIUNA Mihaela Oana	S	4/6	67	1/3					3/3		2	1			1				1							28:53	5.00	
92	NOGUEIRA MARTINS Caroline Aparecida																										25:45	-2.25	
98	COSTA MORENO Debora Solange		2/5	40	0/1	0/1			1/2	1/1				1			1		2	1	3						26:24	3.25	
99	GOMES UNJANQUE Maria Joao		3/5	60	3/5							1			1	2	2					5	1				24:11	4.25	
Team / bench																													
TOTAL			41/61	67	13/21	6/11	4/4	3/3	4/7	11/15	0/0	12	3	3	2	13	8	2	2	3	18	0	4	0	0				

Goalkeepers		Saves / shots										Val.
#	Surname and name	Tot.	%	9m	6m	Wing	7m	FB	Brk.	LD		
18	COSTA ROSA Matilde Felicio	9/24	38	7/13			0/2		2/8	0/1		4.25
92	NOGUEIRA MARTINS Caroline Aparecida	3/17	18	2/4	0/1	0/1	1/2	0/3	0/6			-2.25
TOTAL		12/41	29	9/17	0/1	0/3	1/2	0/3	2/14	0/1		

Coach: Sheila Cristina Rito Santos

Number of attacks: 72, Efficiency: 57%, Average Duration: 27.88 seconds

### Attack by type of defense

	Shots	9m	6m	Wing	TF	E7	E2
On def. 6-0	34/51	13/21	6/11	4/4	13	3	2
Fastbreak	4/7				0	0	0

### Defense by type

	Total	9m	6m	Wing	Stl.	C7	2m
Def. 6-0	24/45	8/22	1/2	3/6	8	2	4
Fastbreak	3/3				0	0	0

### Attack with superiority / minority / goalkeeper out

	Attack				Reaction		
	Att.	Eff.	Shots	TF	FB	LD	Tot.
7 on 6 (GK out)	6	67%	4/5	1	1/1	0/0	1/1
6 on 6 (GK out)	6	33%	2/3	3	0/0	0/0	0/0
6 on 6	55	56%	31/46	9			
5 on 6	2	100%	2/2	0			
7 on 5 (GK out)	2	50%	1/2	0	0/0	0/0	0/0
6 on 5	1	100%	1/1	0			

Player superiority / GK out counted at the end of attack (in case it changes during attack)

### Defense with superiority / minority / goalkeeper out

	Attack				Reaction		
	Att.	Eff.	Shots	TF	FB	LD	Tot.
7 on 5 (GK out)	1	100%	1/1	0	0/0	0/0	0/0
6 on 6 (GK out)	2	0%	0/2	0	0/0	0/0	0/0
6 on 6	56	41%	23/41	15			
6 on 5	9	56%	5/6	3			
5 on 6	1	0%	0/0	1			

Numbers show attacking numbers of opponent. Lower efficiency of opponent means better defense of this team

# Jersey number Tot. Total shooting 6m 6m (line) shooting 9m 9m shooting Wng Wing shooting FB Fastbreak sh. 7m 7m penalty sh.  
 Brk. Breakthrough sh. LD Long distance sh. As. Assists PC Pass clear chance E7 Earned 7m pen. TF Technical faults St. Steals  
 2m 2m punishments C7. Committed 7m E2 Earned 2m pun. YC. Yellow cards R/B Red/Blue cards Blk. Blocks S Starting Line-up

Handball statistics and livescore by Toma-soft ltd (www.toma-soft.hr)



# Trofeul Carpati NIRO 2025



3. round

## Match Team Statistics

Match No.

## Czech Republic 29 - 41 Portugal

(15 - 20) (14 - 21)

23.11.2025. 15:00

Attendance: 300

TeraPlast Arena

Referees: Adrian Georgescu (ROU) / Bogdan Isdraila (ROU)

## Shot distribution by player

### 8 C. Ramos Sequeira

1/1		1/1
		1/1
		1/1

### 9 A. Policarpo Silva

1/1	0/1	

1 post

### 11 R. Bento Campos

1/1	0/1	
1/1		1/1

### 17 L. Mahouin Ribeiro

1/1		

### 19 P. Da Silva Lima

	0/1	1/1
0/1		1/1
		1/1

2 post 1 miss.

### 22 N. Rodrigues

		1/1

### 25 L. Resende Rebelo

2/2		1/1
2/2		1/1
2/2		1/1

1 post

### 29 J. Oliveira Garces

1/1		1/1

### 61 L. Gomes Jesus

		1/1
0/1		1/1
	1/1	

### 70 M. Azevedo Oliveira

	0/1	1/1

### 73 J. Santos Resende

1/1	1/1	
		1/2
	1/1	

1 post

### 77 M. Minciuna

		1/1
1/2		1/1
1/1		

1 block

### 98 D. Costa Moreno

	0/1	
	1/1	1/1

2 miss.

### 99 M. Gomes Unjanque

		3/3
	0/1	

1 post

## TOTAL

5/5	1/5	10/10
5/8		7/8
5/5	3/5	5/5

6 post 3 miss. 1 block

## Saves distribution goalkeepers

### 18 M. Costa Rosa

	1/1	1/2
1/3	1/1	0/4
2/3	2/4	1/6

### 92 C. Nogueira Martins

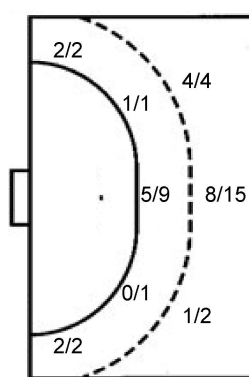
0/3		
0/3		1/3
0/1	1/3	1/3

## TOTAL

0/3	1/1	1/2
1/6	1/1	1/7
2/4	3/7	2/9

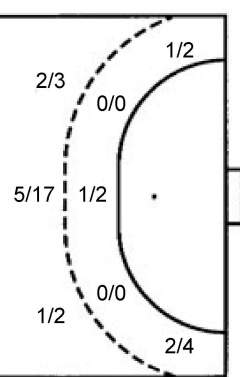
## Shots by position

### ATTACK



7m penalties 3/3  
Fastbreak 4/7  
Breakthrough 11/15  
Long dist. 0/0

### DEFENSE



7m penalties 1/2  
Fastbreak 3/3  
Breakthrough 12/15  
Long dist. 1/2

## Shooting statistics

Position	Goals	Sav.	Miss.	Post	Blk.	Total	%
Back (9m)	13	5	1	1	1	21	62
Line (6m)	6	4	1	0	0	11	55
Wing	4	0	0	0	0	4	100
7m penalties	3	0	0	0	0	3	100
Fastbreak	4	0	1	2	0	7	57
Breakthrough	11	1	0	3	0	15	73
<b>Total</b>	<b>41</b>	<b>10</b>	<b>3</b>	<b>6</b>	<b>1</b>	<b>61</b>	<b>67</b>

# Jersey number Tot. Total shooting 6m 6m (line) shooting 9m 9m shooting Wng Wing shooting FB Fastbreak sh. 7m 7m penalty sh.  
Brk. Breakthrough sh. LD Long distance sh. As. Assists PC Pass clear chance E7 Earned 7m pen. TF Technical faults St. Steals  
2m 2m punishments C7. Committed 7m E2 Earned 2m pun. YC. Yellow cards R/B Red/Blue cards Blk. Blocks S Starting Line-up

Handball statistics and livescore by Toma-soft ltd (www.toma-soft.hr)

